

FLOWER SLOUCH HAT — BY JENNIFER JOHNSTONE

YARN:

50gm Crucci Angora Medium Grey 8ply yarn
(main colour)
20gm SKEINZ "Candy" Double Knit Random 8ply yarn
(contrast colour)

NEEDLES:

4mm and 5mm circular needles

PATTERN:

Cast on 100 stitches (4mm) using main colour.
Join in the round taking care not to twist.

Work in K1 P1 rib for 10 rows.

Change to 5mm needles.
Knit the next row, increasing 20 stitches evenly
spaced around row. (120 stitches)

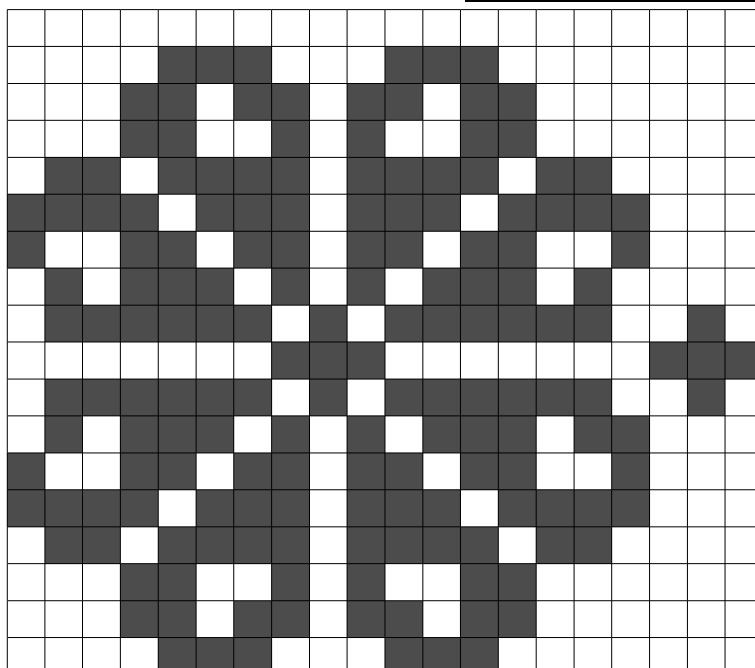
Knit 10 rows.

Work the 17 rows of chart pattern (20 stitch repeat)

Knit a further 30 rows in main colour.

On the next round k2tog around (60 stitches)
On the next round work 2tog around (30 stitches)
On the next round work 2tog around (15 stitches)

Thread the yarn through the remaining stitches.
Pull tight to finish off.



(logo: <http://knittingiceland.com/>)